

MITSUBISHI ELECTRIC CORPORATION
PUBLIC RELATIONS DIVISION
7-3, Marunouchi 2-chome, Chiyoda-ku, Tokyo, 100-8310 Japan

FOR IMMEDIATE RELEASE

No. 3208

Customer Inquiries

Media Inquiries

LCD Marketing Dept.
Mitsubishi Electric Corporation

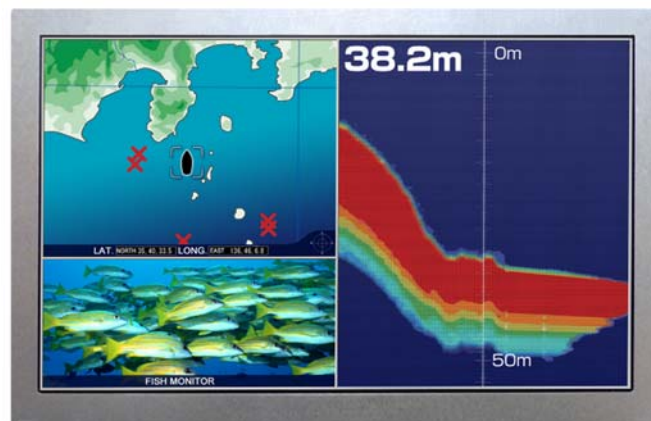
Public Relations Division
Mitsubishi Electric Corporation
prd.gnews@nk.MitsubishiElectric.co.jp
www.MitsubishiElectric.com/news

www.MitsubishiElectric.com/semiconductors

Mitsubishi Electric to Launch 7.0-inch WXGA Color TFT-LCD Module

Ideal for versatile outdoor measuring instruments and industrial devices

TOKYO, August 22, 2018 – [Mitsubishi Electric Corporation](http://www.mitsubishielectric.com) (TOKYO: 6503) announced today the coming launch of a new 7.0-inch WXGA TFT-LCD module for industrial applications including outdoor measuring instruments, devices and more. The module will offer an unprecedented combination of high-resolution WXGA (1,280 × 768 dots), super-wide 176-degree horizontal/vertical viewing angles, high brightness of 1,000 cd/m², a high contrast ratio of 1000:1, a versatile operating temperature range of -40 to 80 degrees Celsius, and high vibration resistance. Sample sales will begin September 20 through Mitsubishi Electric offices worldwide.



Mitsubishi Electric Color TFT-LCD Module
AA070TA11

The new TFT-LCD module will satisfy increasing market demands for versatile applications and installations requiring features such as high resolution, wide viewing angles, high brightness and high resistance to vibrations and extreme temperatures.

Mitsubishi Electric now offers 34 TFT-LCD modules with super-wide viewing angles.

Product Features

1) *High resolution, super-wide viewing angles and high brightness for diverse measuring instruments and installations*

- High-resolution 1,280 (H) × 768 (V) WXGA screen capably handles dense information
- Super-wide viewing angles of 176 degrees, both horizontally and vertically, ensure excellent visibility in a wide range of installations
- High brightness of 1,000 cd/m² and high contrast ratio of 1000:1 for excellent visibility in bright environments. Dimming ratio from 1 to 100% assures visibility at any level of ambient brightness
- Newly designed LED backlight improves brightness efficiency by 30% (compared to conventional LED backlighting of same brightness) and contributes to low power consumption

2) *Wide operating temperature range and high vibration resistance for outdoor industrial devices*

- Rugged components enable use in extreme environments from -40 to 80 degrees Celsius
- Optimized mechanical design achieves high vibration resistance of 6.8Gs (7x greater than 1.0Gs of existing Mitsubishi Electric “AA...” products) for compression mountings (LCD peripheral pressed from behind to attach to chassis) or 2Gs for side mountings (attached to chassis via side holes)

Sales Schedule

Product	Model	LED driver	Sample Shipments
7.0-inch WXGA TFT-LCD Module	AA070TA01	Implemented	September 20, 2018
	AA070TA11	-	

Specifications

	AA070TA01	AA070TA11
Display size (resolution)	17.8cm (7.0-inch) WXGA	
Display area (mm)	151.68 (H) × 91.01 (V)	
Dots	1280 (H) × 768 (V)	
Pixel pitch (mm)	0.1185 (H) × 0.1185 (V)	
Contrast ratio	1000:1	
Luminance (cd/m ²)	1,000	
View angles (°)(U/D), (L/R)	88/88, 88/88	
Colors	262k (6bit/color) / 16.77M (8bit/color)	
Color gamut (NTSC; %)	50	
LED driver	Implemented	-
Backlight lifetime (Typ.)(hr)	100,000	
Electrical interface	LVDS 6/8-bit	
Dimensions (mm)	169.8 × 109.7 × 8.9	
Operating temperatures (°C)	-40 to +80	
Storage temperatures (°C)	-40 to +80	

Super-Wide Viewing-Angle Lineup

Display	Resolution	Model	Display	Resolution	Model
3.5-inch	QHD	AA035AE01	10.1-inch	WXGA	AA101TA02/12
5.0-inch	WVGA	AA050MG03/MH01	10.4-inch	SVGA	AA104SJ02
7.0-inch	WVGA	AA070MC01/11		XGA	AA104XG02/12
		AT070MP01/11	10.6-inch	WXGA	AA106TA01/11
	WXGA	AA070TA01/11	12.1-inch	SVGA	AA121ST01
7.8-inch	800 × 300	AA078AA01		XGA	AA121XP01/13
8.0-inch	WVGA	AT080MD01/11		WXGA	AA121TH01/11
8.4-inch	SVGA	AA084SC01	15.0-inch	XGA	AA150XW01/14
	XGA	AA084XD01/11		SXGA+	AA150PD03/13
9.0-inch	WVGA	AA090ME01	17.5-inch	WXGA	AA175TE03
	WXGA	AA090TB01			

Environmental Awareness

The models are mercury-free and fully compliant with the Restriction of the Use of Certain Hazardous Substances in Electrical and Electronic Equipment (RoHS) directive 2011/65/EU.

###

About Mitsubishi Electric Corporation

With nearly 100 years of experience in providing reliable, high-quality products, Mitsubishi Electric Corporation (TOKYO: 6503) is a recognized world leader in the manufacture, marketing and sales of electrical and electronic equipment used in information processing and communications, space development and satellite communications, consumer electronics, industrial technology, energy, transportation and building equipment. Embracing the spirit of its corporate statement, Changes for the Better, and its environmental statement, Eco Changes, Mitsubishi Electric endeavors to be a global, leading green company, enriching society with technology. The company recorded consolidated group sales of 4,444.4 billion yen (in accordance with IFRS; US\$ 41.9 billion*) in the fiscal year ended March 31, 2018. For more information visit:

www.MitsubishiElectric.com

*At an exchange rate of 106 yen to the US dollar, the rate given by the Tokyo Foreign Exchange Market on March 31, 2018